

Powerware® 9315-625

Uninterruptible Power System

Features

- ▶ High power IGBT's deliver superior output voltage regulation, tight output frequency regulation, and minimum output voltage THD. Combined with high speed switching, true pulse-width modulation (PWM) control of the inverter output produces a pristine output waveform.
- ▶ The highly reliable internal Controller Area Network (CAN) communications network provides seamless integration of peripherals and options from the control panel.
- ▶ With PowerVision® monitoring software, you can view real-time data, manage alarms, and trend historical data for each device monitored.
- ▶ Communications options



Model 500, 500 kVA / 450 kW / 400 kW
Model 625, 625 kVA / 562 kW / 500 kW

Powerware has redefined availability in the power protection industry. The combination of the Powerware 9315 with Powerware Hot Sync® paralleling technology delivers the most reliable system available, providing you with the knowledge that your equipment is protected to the greatest degree possible. With more than 40 years of experience designing and building high-end, innovative UPS solutions, Powerware understands the need to deliver the ultimate in power protection and value.

The Powerware 9315-625 is available in the following system configurations:

- ▶ Single module-reverse transfer
- ▶ Multi-module-parallel for capacity/redundancy
- ▶ Powerware Sync Control™
- ▶ Isolated redundant

Accessories include:

- ▶ Remote monitor panel
- ▶ Supervisory contact module
- ▶ Relay interface module
- ▶ DC battery breakers





Each UPS offers the following standard features:

- ▶ Input isolation transformer
- ▶ High efficiency-up to 93%
- ▶ High speed, IGBT PWM inverter
- ▶ Powerware Hot Sync® wireless paralleling capability
- ▶ Large LCD monitor panel
- ▶ Highly reliable, internal CAN communication network
- ▶ Communications panel with RS232 ports and building alarms
- ▶ 12-pulse rectifier
- ▶ Digital signal processing (DSP) control
- ▶ Top cable entry
- ▶ Front access only required
- ▶ Washable air filters

Optional features available:

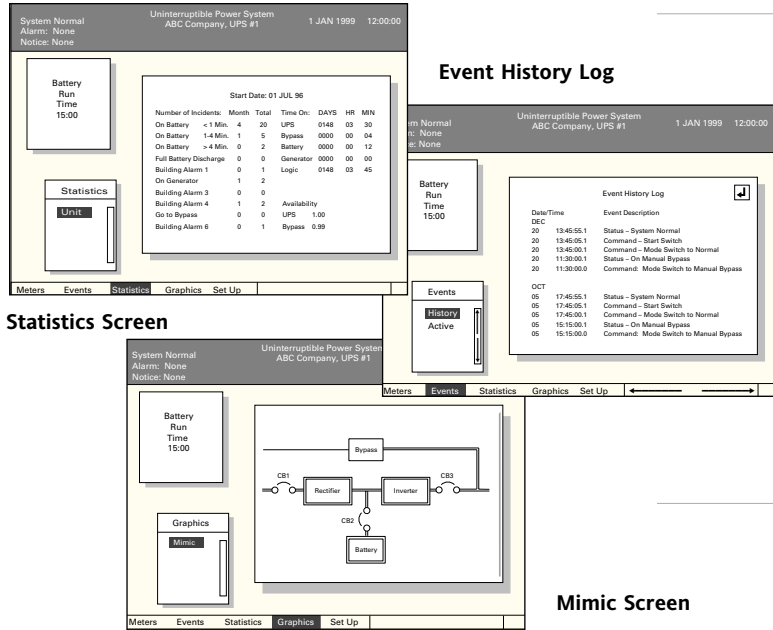
- ▶ Intelligent input filter (5% THD)
- ▶ 0.9 output p.f.
- ▶ High AIC input circuit breaker rating
- ▶ Inrush current limiter
- ▶ Internal modem
- ▶ Remote Notify™
- ▶ PowerVision® monitoring software

Powerware Recommends

| Software | Connectivity | Service | System Solutions |
|--|--|---|---|
| <ul style="list-style-type: none"> > PowerVision® > LanSafe™ > FORESEER®  | <ul style="list-style-type: none"> > ConnectUPS-X SNMP/WEB card > Single port serial card > Expansion Chassis  | <ul style="list-style-type: none"> > ProActive Service Plan > Preventive Maintenance > CELLWATCH®  | <ul style="list-style-type: none"> > Powerware Hot Sync® > PF² Flywheel > PDM > RPP > External Maintenance Bypass  |

Please contact your sales representative for a solution tailored to your specific needs.

Advanced Communications



- ▶ Large, easy-to-read LCD measures 191 mm x 152 mm (7.5" x 6")
- ▶ Push-button controls allow easy access to data through user-friendly interface.
- ▶ Operational metering features:
 - True RMS sensing of voltage and current
 - Real-time display
- ▶ Displays up to 400 of the most recent events. All data is accessible via modem.

Powerware 9315-625 Performance Characteristics†

| | | Model 625 | | Model 500 | |
|---------------------------------|-------|-----------------------------|----------------|----------------|----------------|
| | | 625 kVA/562 kW ^① | 625 kVA/500 kW | 500 kVA/450 kW | 500 kVA/400 kW |
| Input voltage | Volts | 400 | 400 | 400 | 400 |
| Output voltage | Volts | 400 | 400 | 400 | 400 |
| Input voltage range | | | | | |
| Minimum | Volts | 340 | 340 | 340 | 340 |
| Maximum | Volts | 440 | 440 | 440 | 440 |
| Input / output frequency | Hz | 50/60 | 50/60 | 50/60 | 50/60 |
| AC Input | | | | | |
| Maximum amps ^② | Amps | 1138 | 1100 | 910 | 880 |
| Bypass input | | | | | |
| Nominal amps | Amps | 902 | 902 | 722 | 722 |
| AC output | | | | | |
| Nominal amps | Amps | 902 | 902 | 722 | 722 |
| 10 Minutes max. | Amps | 1118 | 1118 | 895 | 895 |
| DC link | | | | | |
| Nominal DC voltage | Volts | 384 | 384 | 384 | 384 |
| Float voltage | Volts | 432 | 432 | 432 | 432 |
| End of discharge | Volts | 320 | 320 | 320 | 320 |
| Nominal amps | Amps | 1542 | 1371 | 1234 | 1096 |
| System efficiencies (typical) | | | | | |
| @ 100% load | % | 92.5 | 93 | 92 | 92 |
| @ 75% load | % | 93 | 93 | 92 | 92 |
| @ 50% load | % | 92 | 92 | 91.5 | 91.5 |
| Full load heat dissipation | | | | | |
| BTU/Hr. (x1000) | | 144.6 | 109.0 | 115.7 | 87.2 |
| KW | | 42.4 | 31.9 | 33.9 | 25.5 |
| Inverter efficiency (full load) | % | 95 | 95 | 95 | 95 |

① Optional 0.9 output p.f.

② Maximum amps equals full load current plus battery recharge current. Shipping pallet and packaging adds 50 to 300 lbs. per shipping unit.

† Specifications subject to change without notice. Please visit www.powerware.com for most current information



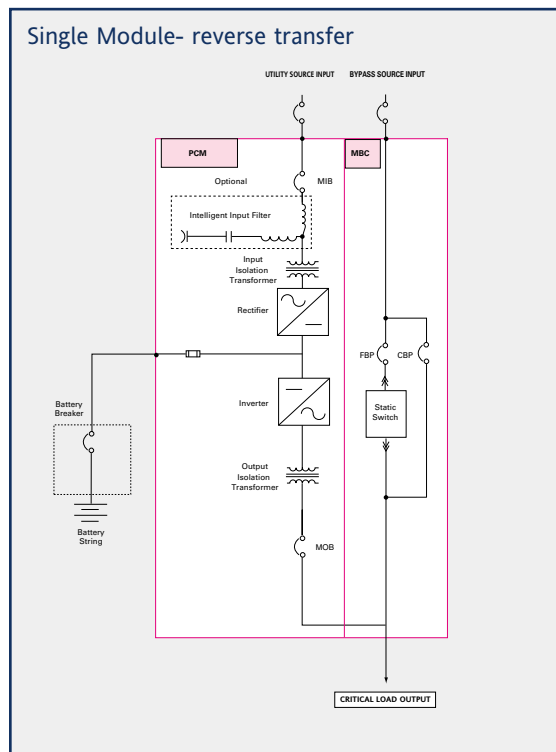
- ▶ Intelligent alarm management — event record separates informational notices from situations requiring operator intervention.
- ▶ In addition to the LCD panel, LEDs indicate UPS operating status at a glance.
- ▶ Unique system performance statistics include summary information on:
 - UPS and bypass availability
 - Frequency and length of on-battery conditions
 - Building alarms
 - Time on bypass, and much more
- ▶ A hinged access cover protects an emergency power-off (EPO) button that quickly de-energizes the UPS and critical load.

Specifications†

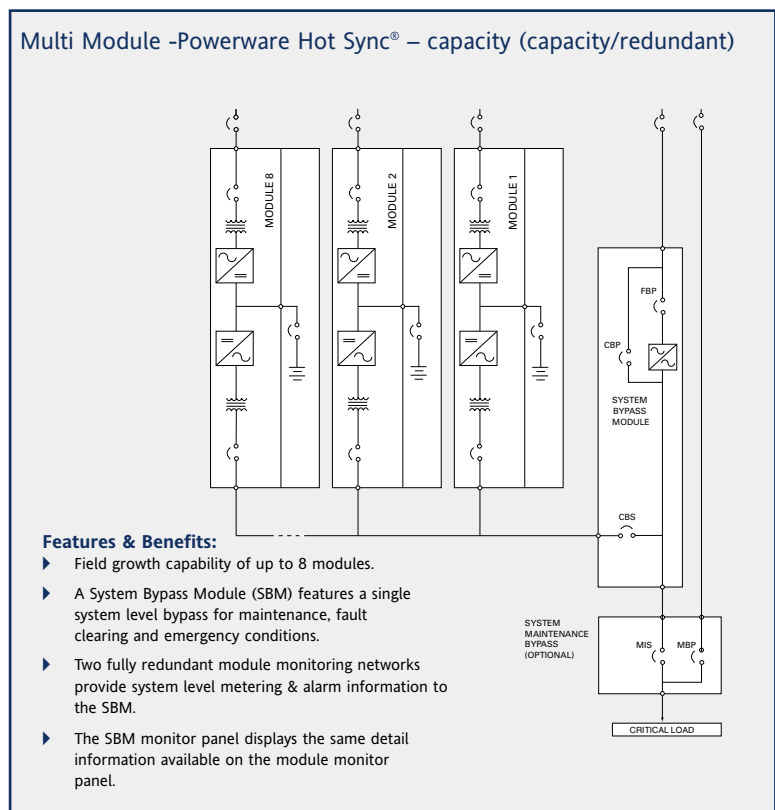
| Input | |
|--|--|
| Voltage Range | +10% to -15% |
| Frequency Range | ±3 Hz of nominal |
| Surge Protection | meets ANSI C62.41, Category A & B, EN 50091-2 |
| Power Factor | .85 lag at nominal full load; .90 lag with input filter |
| Input Current Distortion | less than 12% without input filter, less than 5% with optional input filter |
| Inrush Current | 6X input current (sub-cycle), 1x with Inrush limiter option |
| Power Walk-in | Adjustable 3-60 second rectifier ramp-up to full utility load |
| Output | |
| Voltage THD | Less than 5% (100% non-linear load with 3:1 crest factor); less than 3% (100% linear load) |
| Voltage Regulation | Better than ±1% (10-100% load) |
| Transient Response | Less than 5% for 100% load step or removal |
| Frequency (free run) | ±0.01 Hz |
| Frequency Sync Range | ±0.5 Hz |
| Frequency Slew Rate | 1 Hz/second maximum (adjustable) |
| Overload Capability | Up to 124% for 10 min. from 125-150% for 10 seconds |
| Maximum Output Capability | 300% peak for 4 cycles without bypass |
| Environmental | |
| Ambient Temperature | |
| Operation | 0°C to +40°C |
| Storage | -20°C to 70°C |
| Relative Humidity: Operation and Storage | Up to 95% non-condensing |
| Altitude | 1500 meters (5000ft.) without load derating |
| Audible Noise | Less than 75 dBA typical at 5 feet |
| Electrostatic Discharge | Withstands 6 kV without damage or disturbance to the load; exceeds requirements of EN50091-2 |
| EMC | Meets FCC Class A |
| | EN 50091-2 (CISPR 22, Class A, Restricted Access) |
| Safety | |
| | Meets EN50091-1-1 |
| | All cabinets provide seismic mounting features |
| | Selectable DC ground fault detection capability |
| Mechanical | |
| Cable Entry | Top |
| Cooling | Filtered forced air with redundant blowers |
| Access | Front only |
| Shipping Split | Largest single section is 63" long |
| Dimensions | Single Module: 149"w x 39"d x 82"h; Multimodule: 127"w x 39"d x 82"h |
| Weight (installed) | Single Module: 13,200 lbs.; Multi-module: 12,600 lbs. |

Online Diagrams

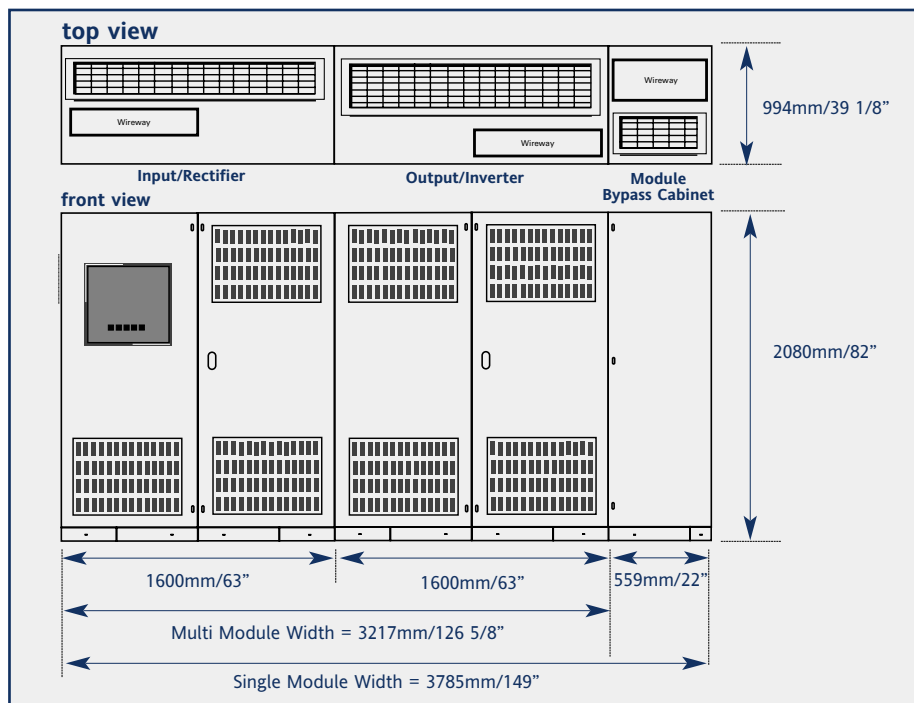
Single Module- reverse transfer



Multi Module -Powerware Hot Sync® – capacity (capacity/redundant)



Physical Dimensions



Invensys Powerware
 8609 Six Forks Road
 Raleigh, NC 27615 U.S.A.
 Toll Free: 1.800.356.5794
 or 919.872.3020
 Fax: 1.800.753.9433
 www.powerware.com
 PLS28FXA
 Reprint 03/03
 Revision 03/03

Europe
 Finland: 358 94 52 661
 France: 33 1 6012 7400
 Germany: 49 7841 666 0
 Italy: 39 02 6600661 2
 UK: 44 (0) 1753 608700

Southeast Asia
 Singapore: 65 6861 0377

China and North Asia
 Hong Kong: 852 2745 6682

Japan
 Shinagawa, Tokyo: 81 3 3447 4441

Australia and South Pacific
 Sydney, Australia: 61 29878 5000

Canada
 Toronto, Ontario: 416.798.0112

Brazil
 Sao Paulo, Brazil:
 (55) 0800 176937

Mexico
 C.P. 11410 Mexico D.F.:
 52 55 9171 7777

invensys™
POWERWARE®